



MANUFACTURING, INC.

Programming your Transmitter

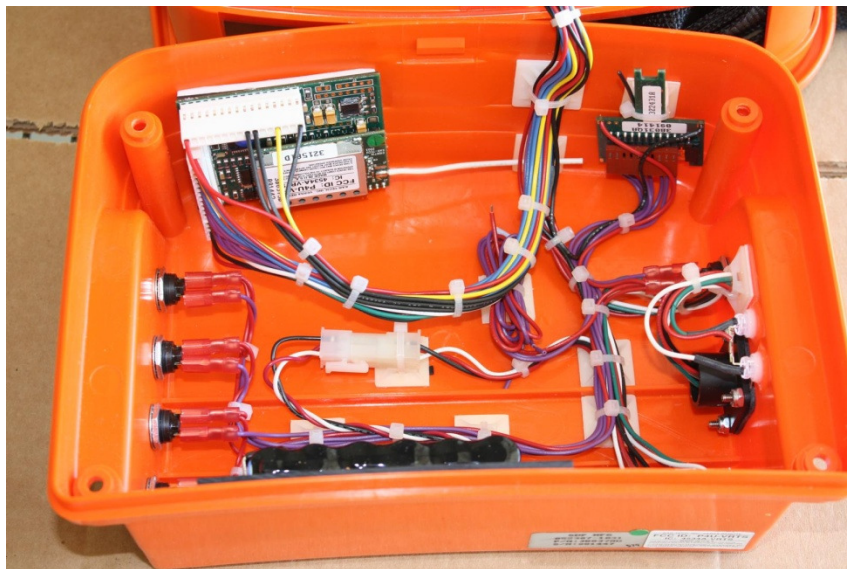
Engine Control

S.D.P. Manufacturing, Inc. is continually attempting to make product improvements. S.D.P Manufacturing, Inc. reserves the right to make changes or additions to any product without incurring any obligation whatsoever to make such changes or additions to products previously sold. This manual is subject to change without notice!

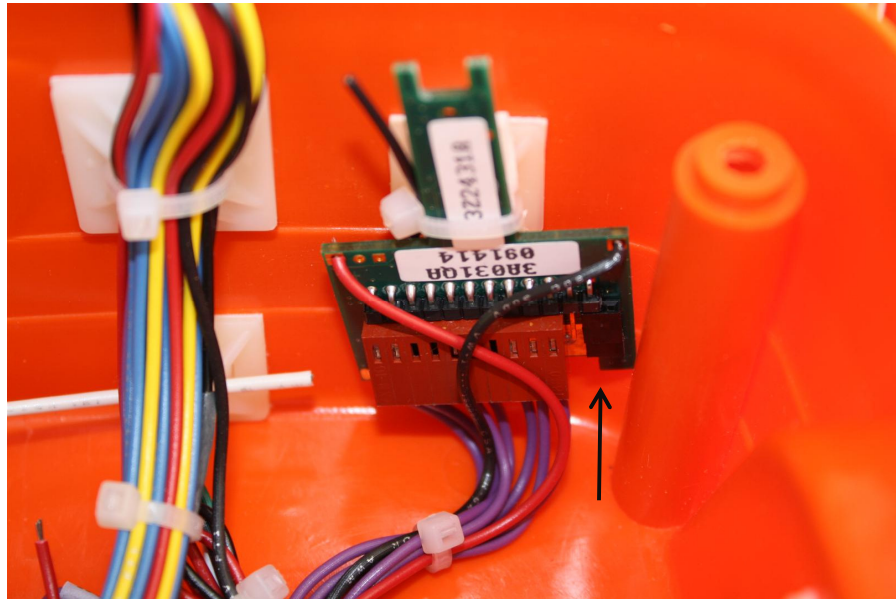
S.D.P Manufacturing, Inc.
400 Industrial Drive
Dunkirk, IN 47336
Email: sales@sdpmfg.com
Web Site: www.sdpmfg.com



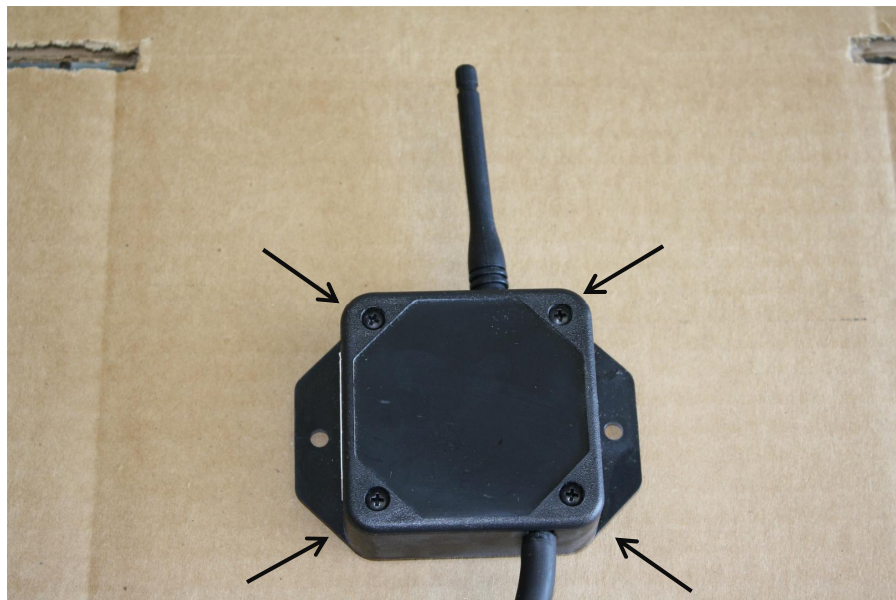
Step 1. Remove the 4 screws from the back of the transmitter, and remove the cover.



Step 2. Apply power to the transmitter.

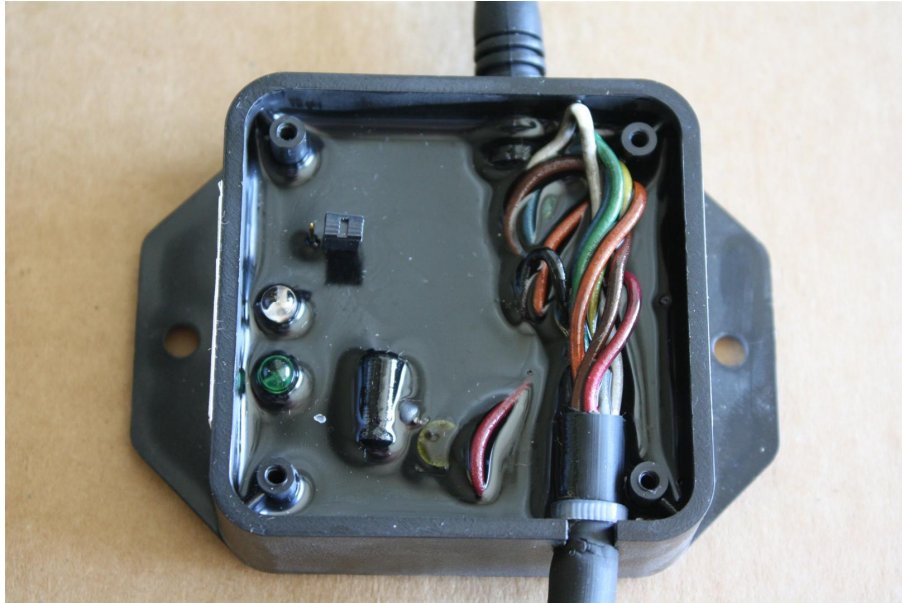


Step 3. With transmitter turned on, place a jumper on the open two pins of the 12 pin connector



Step 4. Remove all the 4 screws on the receiver, and remove the cover.
Apply power to the receiver.

(Machine does not have to be running for programming to work)



Step 5. Place the jumper across the address code jumper inside the receiver. Both green and red lights will toggle inside receiver.

Step 6. Wait for 2 seconds before removing jumper on transmitter. The lights on the receiver should stop flashing.
Remove remaining jumper.

Step 7. Replace covers