



MANUFACTURING, INC.

**MAJOR
IDENTIFICATION
MARKS**

S.D.P. Manufacturing, Inc. is continually attempting to make product improvements. S.D.P Manufacturing, Inc. reserves the right to make changes or additions to any product without incurring any obligation whatsoever to make such changes or additions to product previously sold. This manual is subject to change without notice!

S.D.P. Manufacturing, Inc.
400 Industrial Drive
Dunkirk, IN 47336
Email: sales@sdpmfg.com
Web Site: www.sdpmfg.com

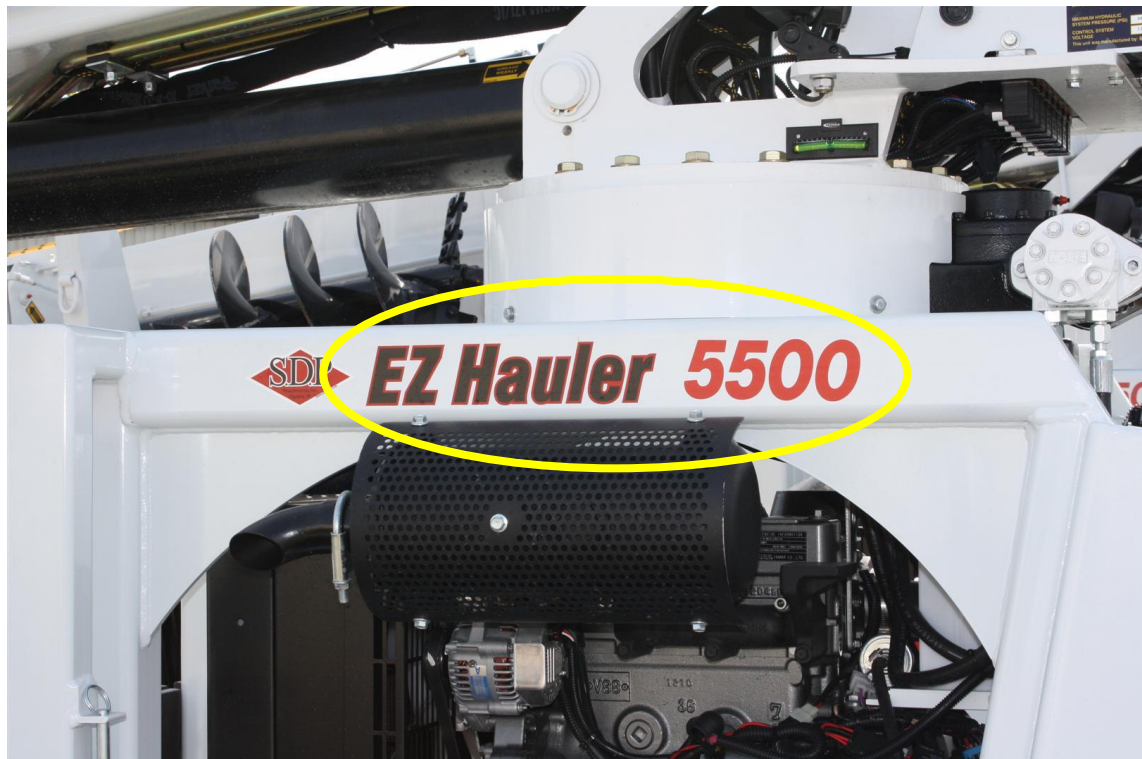
MAJOR IDENTIFICATION MARKS

MACHINE IDENTIFICATION

Machine Decal

MAKE	MODEL	SERIAL NUMBER	YEAR
S.D.P.	5500	101958881283	2011
DATE MANUFACTURED	06/2011	RATED PLATFORM HEIGHT	43'
UNIT EQUIPPED WITH	1 PLATFORM(S)	LBS. PER PLATFORM	300
MATERIAL HANDLING ATTACHMENT: <input checked="" type="checkbox"/> YES <input type="checkbox"/> NO See Load Charts For Capacity		DEVICE COMPLIES WITH REQUIREMENTS OF: ANSI A10.31	
NON-INSULATED	<input type="checkbox"/>	DESIGN VOLTAGE 46 Kv	INSULATING VOLTAGE 46Kv
INSULATED	<input checked="" type="checkbox"/>	QUALIFICATION VOLTAGE 46 Kv	DATE OF TEST 06/2011
CAPACITY RATING SEE LOAD CHART PLACARD(S) FOR SPECIFIC CONFIGURATION CAPACITIES! UNIT MUST BE OPERATED ON A FIRM AND LEVEL SURFACE WITH THE OUTRIGGERS EXTENDED DOWN TO A SOLID FOOTING! USE OUTRIGGER PADS!			
MAXIMUM HYDRAULIC SYSTEM PRESSURE (PSI) 2600 psi.			
CONTROL SYSTEM VOLTAGE 12 v dc			
This unit was manufactured by: S.D.P. Manufacturing, INC. www.SDPMFG.com 071310-0929			

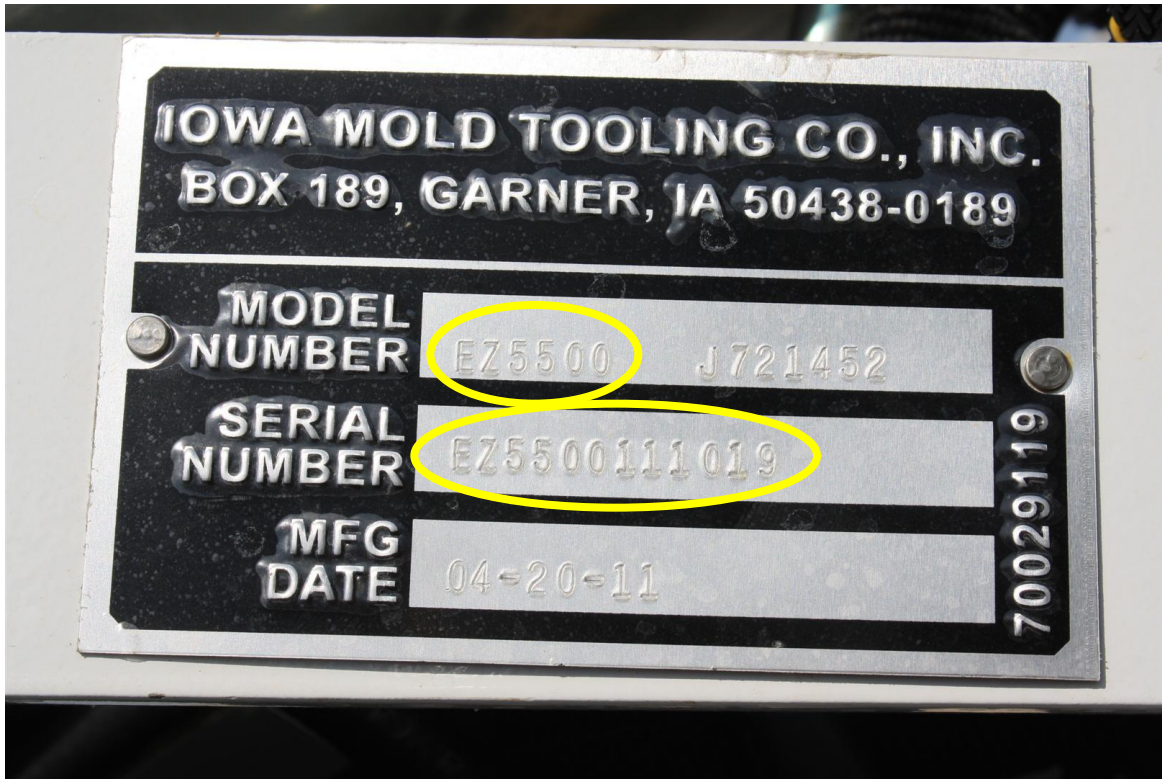
Machine Side



MAJOR IDENTIFICATION MARKS

CRANE IDENTIFICATION

Crane Tag



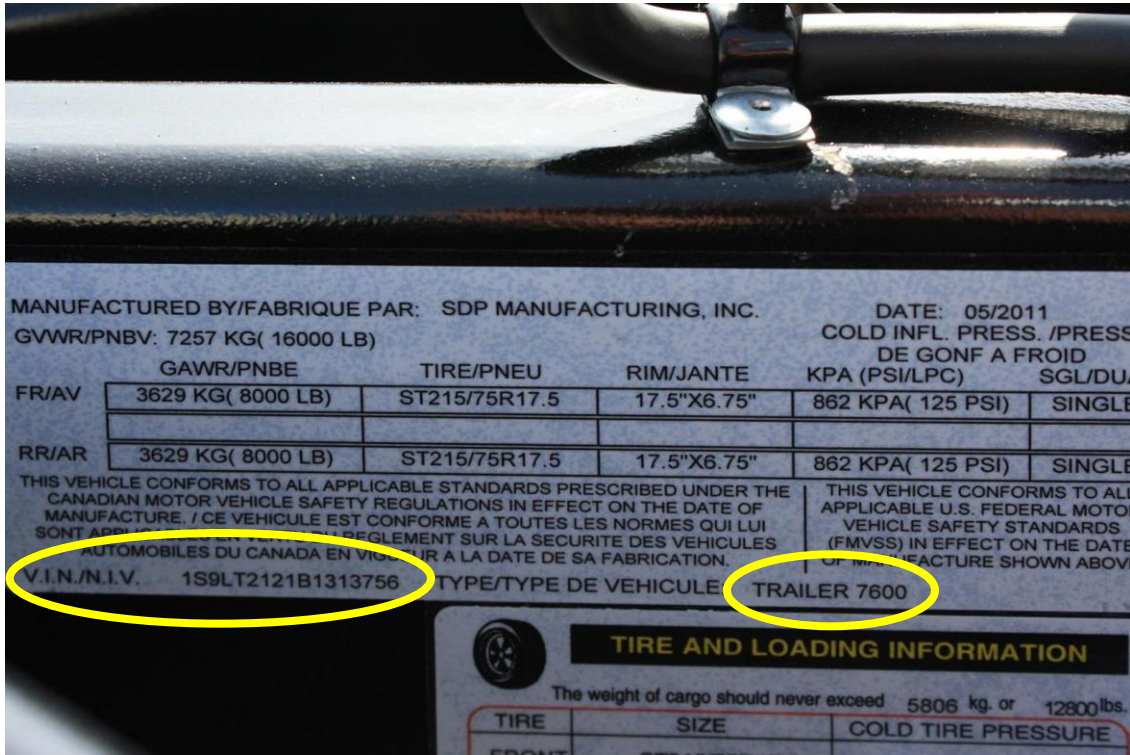
TRAILER & TIRE IDENTIFICATION

VIN #

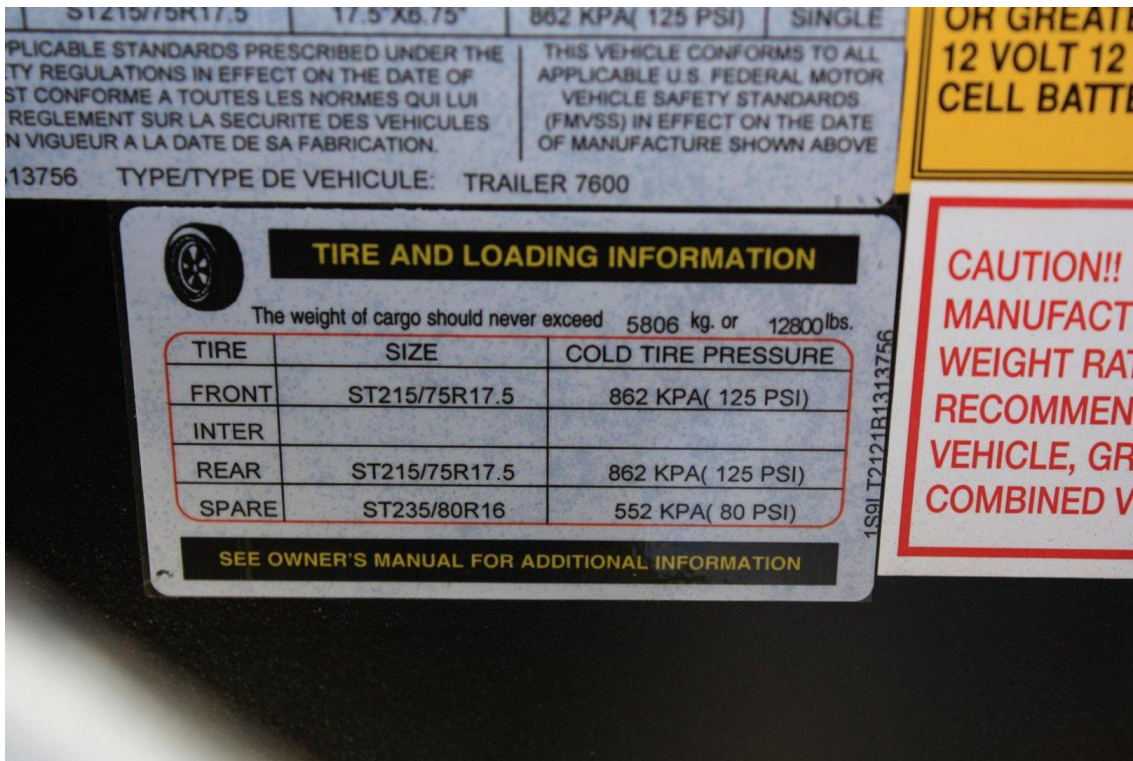


MAJOR IDENTIFICATION MARKS

Trailer Decal



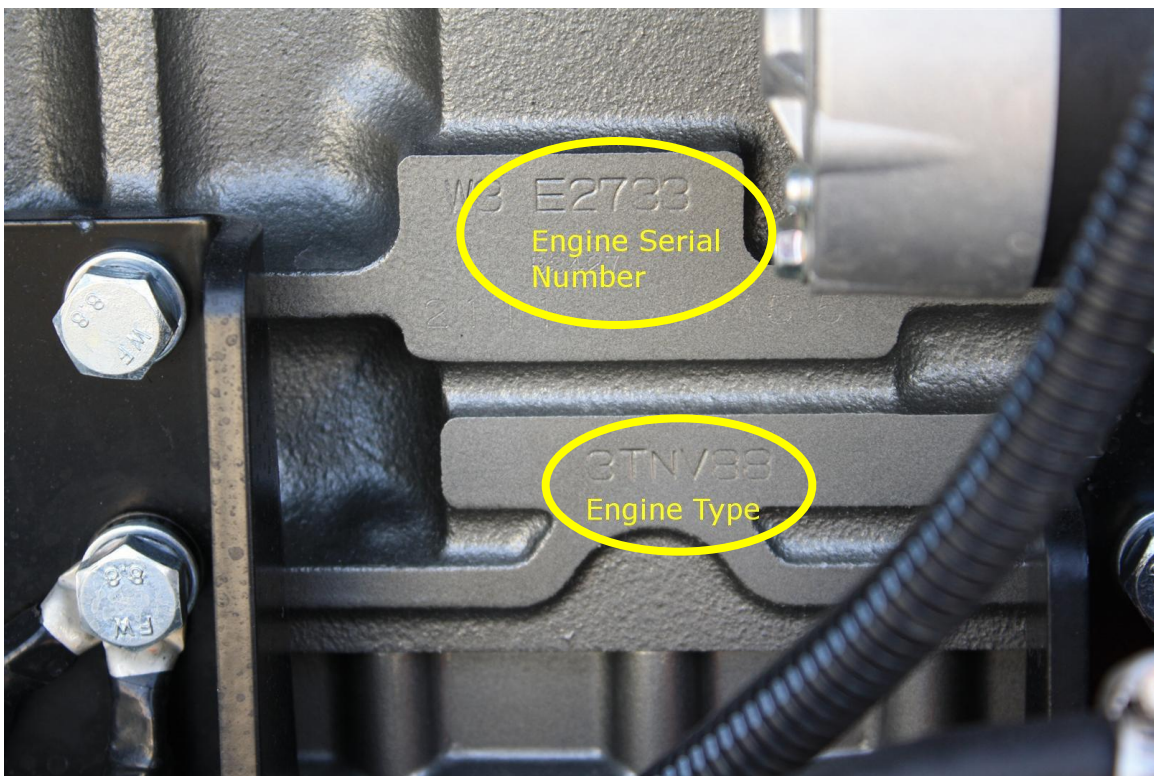
Tire Decal



MAJOR IDENTIFICATION MARKS

ENGINE IDENTIFICATION

Engine Side



Engine Decal

