



MANUFACTURING, INC.

EZ Hauler 3500/3800 Product Announcement

Subject: Outrigger Hub & Pin Update

Date: June 8, 2006

To: EZ Hauler 3500/3800 Owners

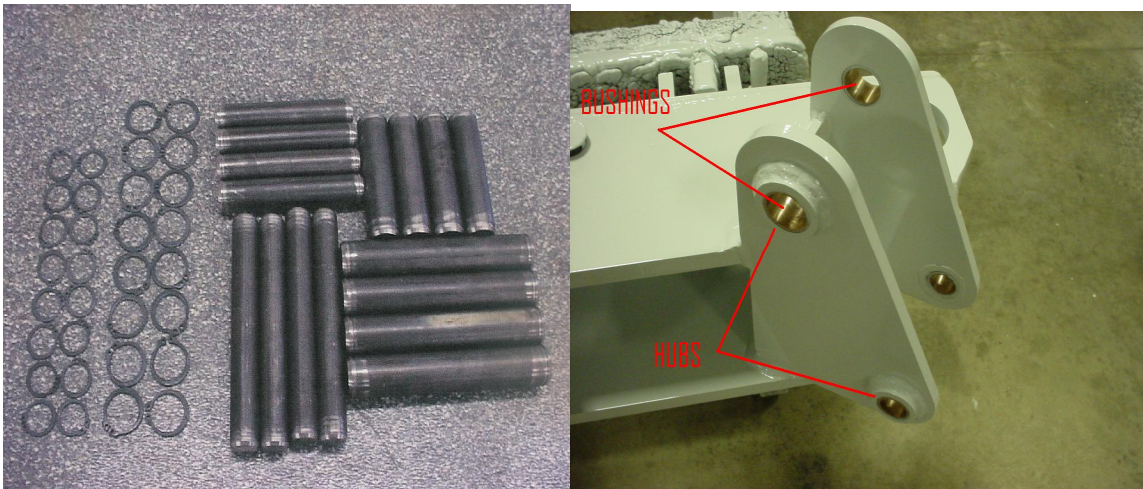
Announcement: CCG1741

From: SDP Product Support

Phone: 765-768-5000

EZ Hauler models 3500/3800 manufactured prior to June 1, 2006 may experience hydraulic outrigger structural damage when overloaded. Failure to update could result in total outrigger failure!

This mandatory update does include that all pins are changed over from the “tear drop pin head w/bolt” style to the snap-ring retention pins. To install this update you will need the hydraulic outrigger pin & bushing kit, that is part number 011008-0331. You will also need the outrigger hub kit, that is part number 031108-0950. The hubs will need welded on, so have a qualified welder do this work.



SDP Manufacturing, Inc.

400 Industrial Drive

Dunkirk, IN 47336

Tel: 765-768-5000 Fax: 765-768-5015

Announcement #: CCG1741

Print Date: 6/8/2006